



2022 UPDATE PROCEDURE LD550 and LD550B AROKA – DP 2258

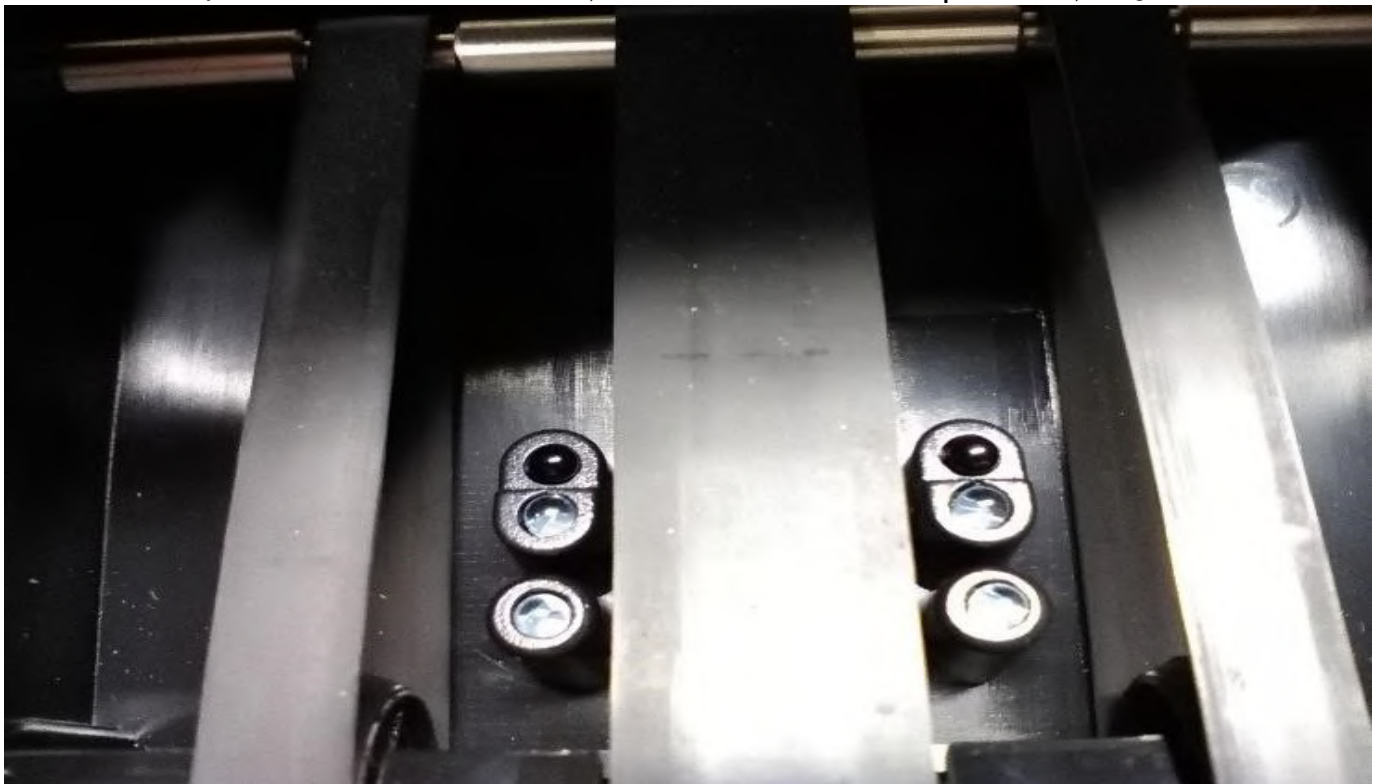
Download:

Download from the following web page : <http://www.reskal.com/sav/> the last update for the LD550.

Be carefull, there are two versions of the model LD550.
To make a difference, you have to check the number of detection cells.
Raising the top pass-through cover for visual inspection.

Model with 6 cells on the bottom:

If your model has 4 white cells and 2 black cells, this is a version before September 1, 2015.



LD550 lower part, old model

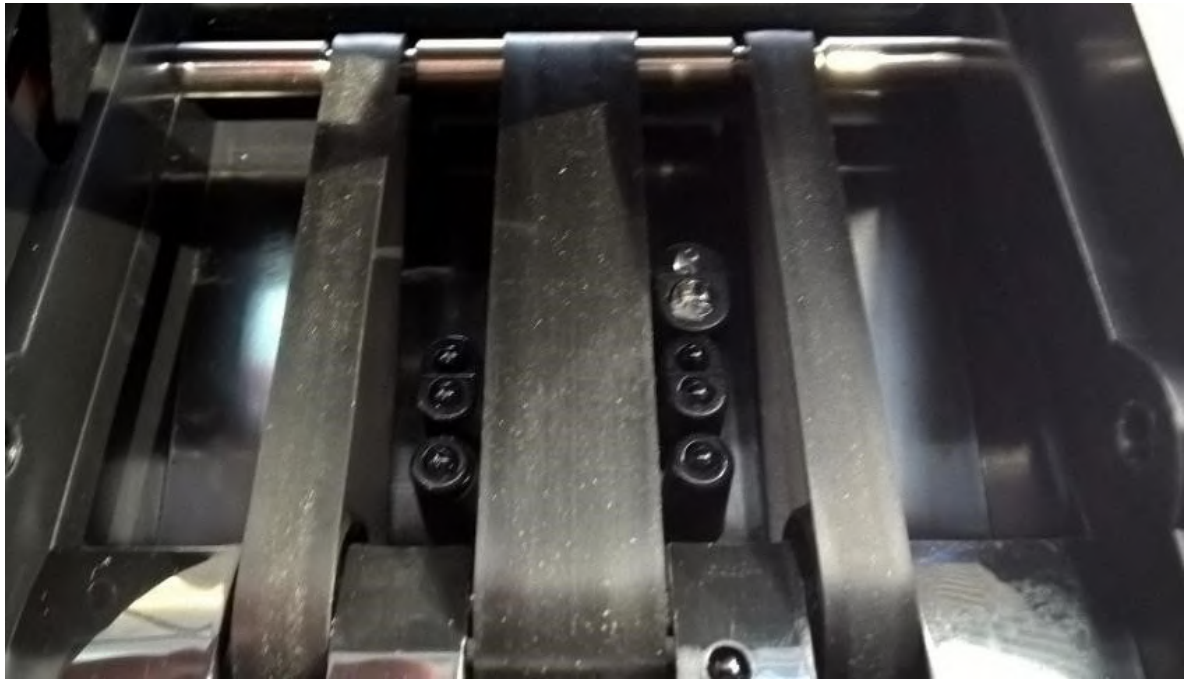
The update can not be performed on this version because this detector model is incompatible with the new banking security standards 2019.

Some PCs may not accept driver installation for the following reasons:

- Presence of a fire-wall ↑ Disconnect your fire-wall before downloading the update.
- Presence of an anti-virus ↑ Disable your anti-virus before downloading the update.
- Hardware Incompatibility ↑ Update your operating system or change PC.

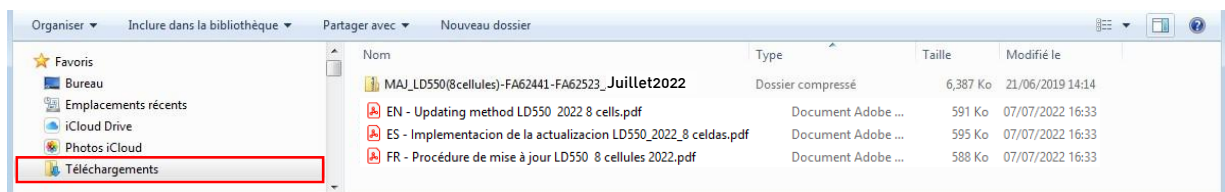
Model with 8 cells on the bottom:

If your model has 6 black cells and 2 white cells, this is a version after September 2, 2015.

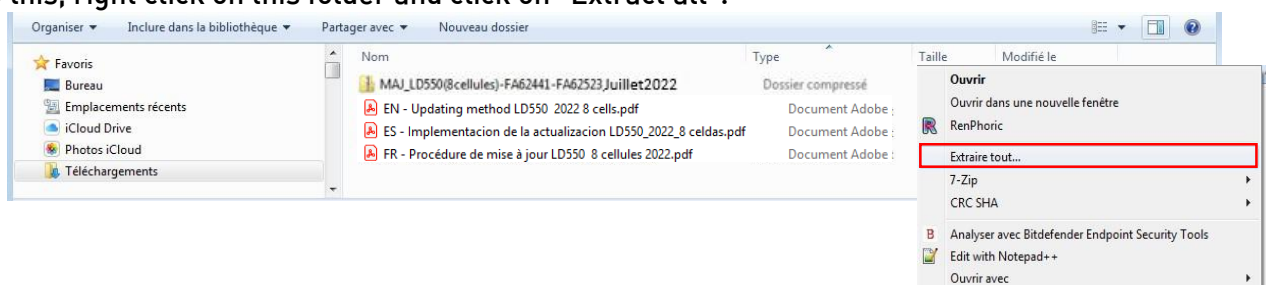


LD550 lower part, new model

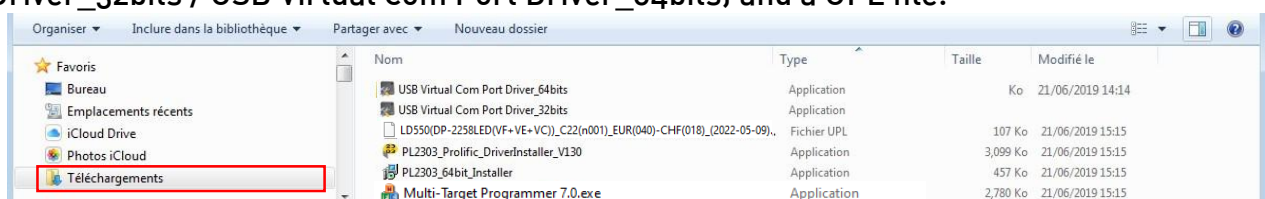
- 1- Select the LD550 update (MAJ_LD550(8 cellules)-FA62441-FA62523_juin2019).
- 2- Save it on your PC.



- 3- Among the downloaded files (3 versions of the installation procedure and a folder), the downloaded file is compressed. It must be decompressed before updating.
To do this, right click on this folder and click on "Extract all".

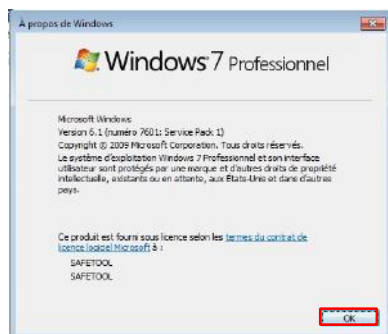
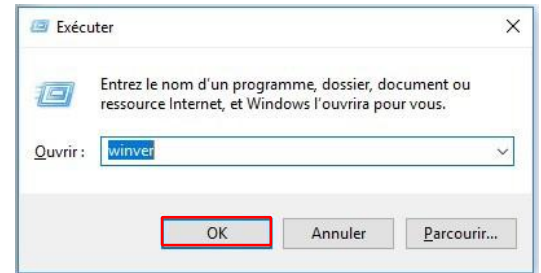


- 4- Once the folder is uncompressed, open it with a doubleclick.
The folder contains 6 elements including 5 applications (Multi-Target Programmer V7.0.exe / PL2303_Prolific_DriverInstaller_V130 / PL2303_64bit_Installer / USB Virtual Com Port Driver_32bits / USB Virtual Com Port Driver_64bits) and a UPL file.



Identify the version of Windows that you are using:

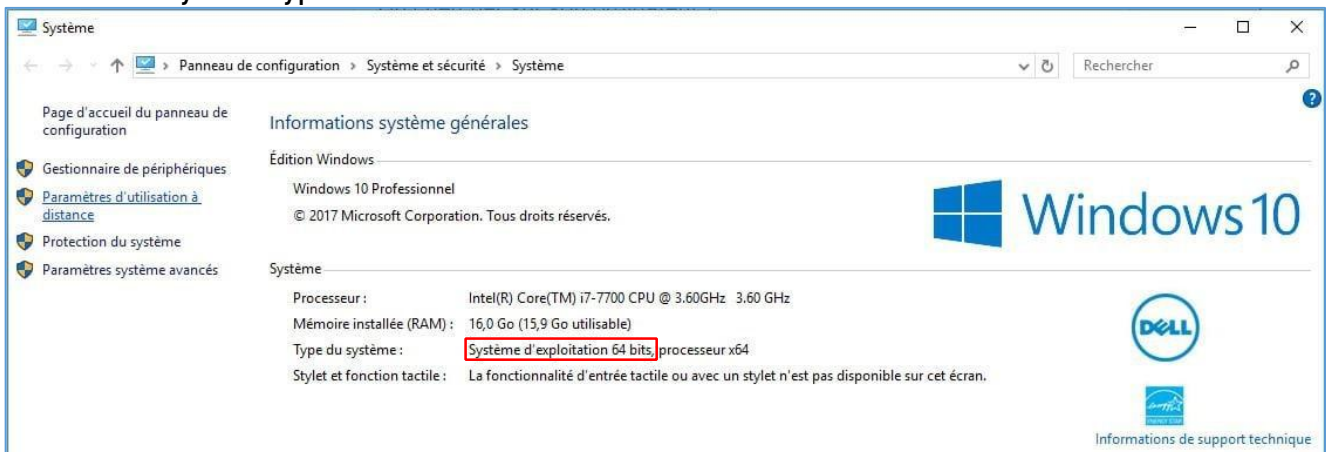
5- Simultaneously press the Windows key on the keyboard (usually at the bottom left, between the Ctrl and Alt keys) and the R key and then type "winver" and confirm with "Enter" (or click on "OK")



Identify the functioning of your PC (32 or 64 bits):

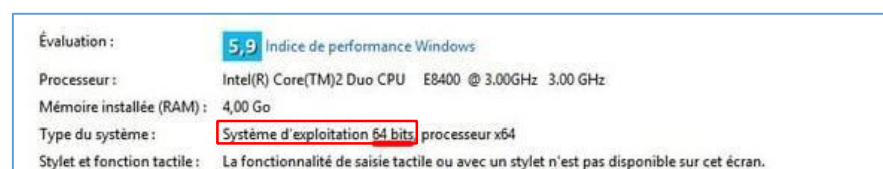
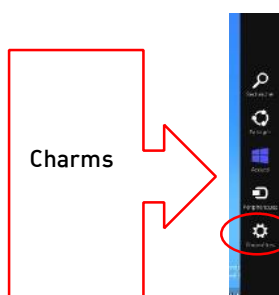
Windows 10:

Right-click on the Windows logo at the bottom left and choose Settings / "System", then "System Information" and look at the "System Type" line.



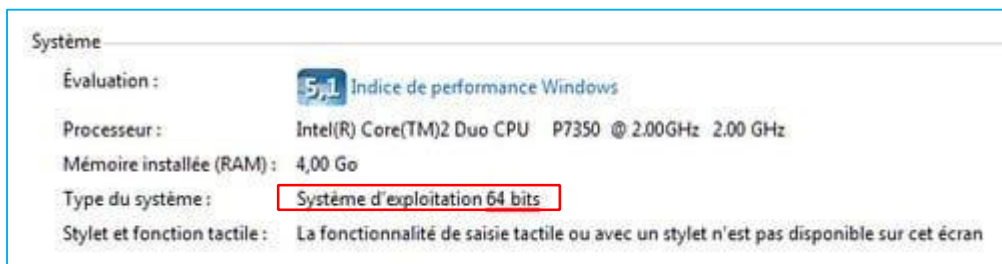
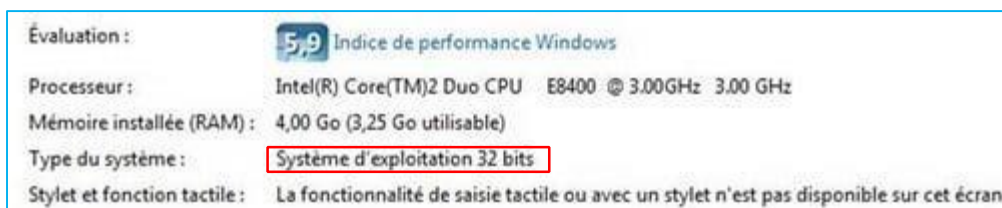
Windows 8:

Place your cursor in one of the right corners of your screen to open the "charms bar" then go to "Settings", select "PC info" then "Under System".



Windows 7 and earlier:

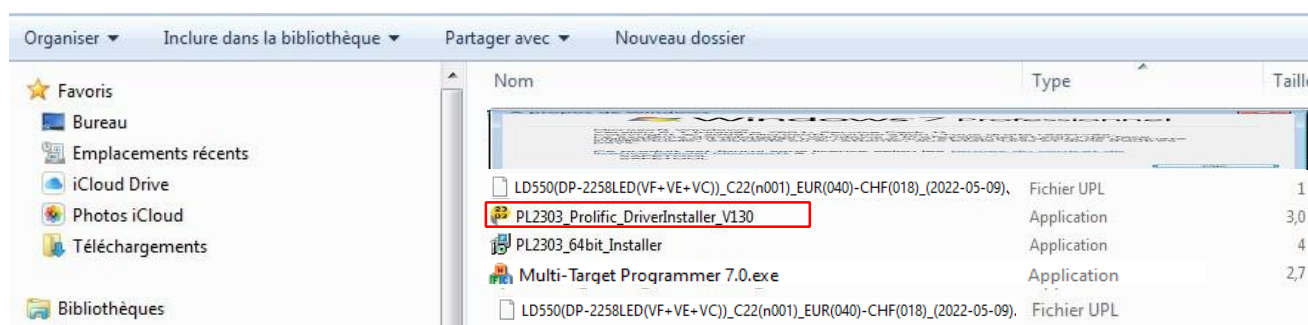
Click on the "Start" button, go to "Control Panel", then in "System and Security", go to "System". If nothing is mentioned, you are certainly in 32 bits.



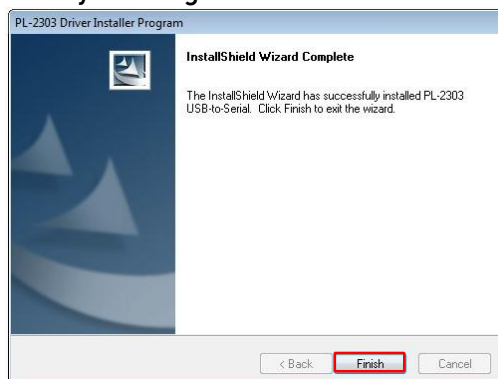
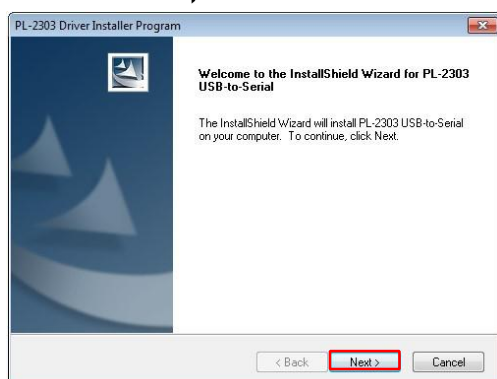
Installing the driver and software on the PC

Version of the LD550	Operating system	32/64 bit operation	Software to install
Before 1/09/2015			No update possible
1/9/2015 ↑ 31/12/2018	Previous to Windows 10		PL2303_Prolific_DriverInstaller_V130
	Windows 10		PL2303_64bit_Installer
After 1/01/2019		32 bits	USB Virtual Com Port Driver_32bits
		64 bits	USB Virtual Com Port Driver_64bits

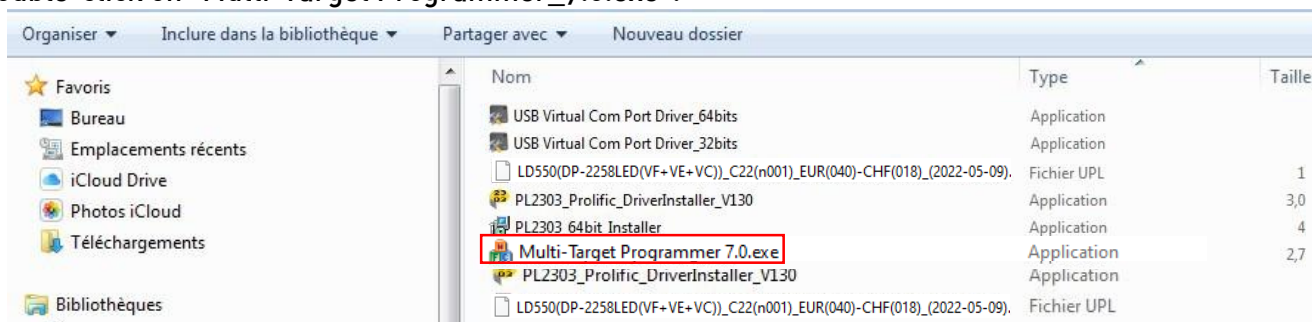
6- Double-click software appropriate for your hardware and follow the installation procedure until the end.



7- Click on "Next" then, once the installation is finished, close by clicking on "Finish".

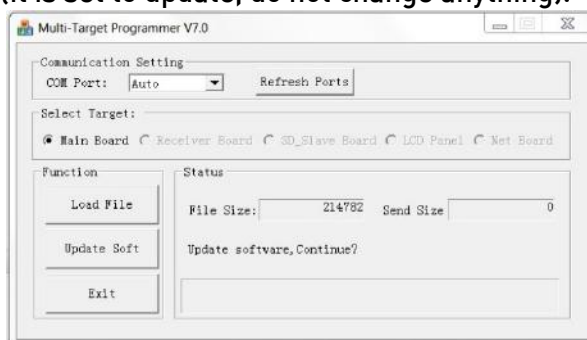


8- Double-click on "Multi-Target Programmer_7.0.exe".

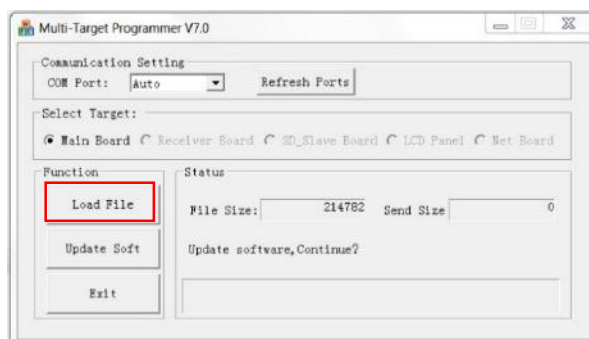


9- Click on "Run".

The screen below appears (it is set to update, do not change anything).

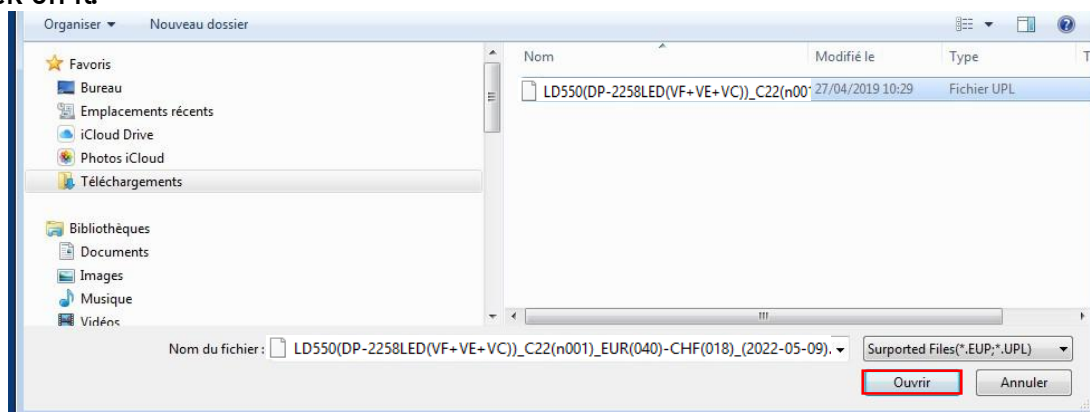


10- Click on "Load File". A new window opens. Choose the folder where the software will be installed (By default, the downloaded items appear in the "Downloads" folder).

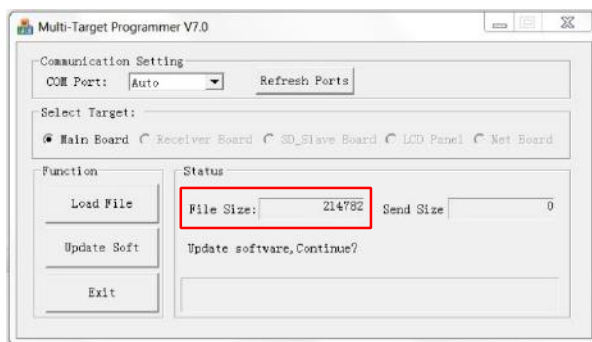


11- Select the folder **LD550(DP-2258LED(VF+VE+VC))_C22(n001)-EUR(40)-CHF(018)-(2022-05-09).UPL**

Double click on it.



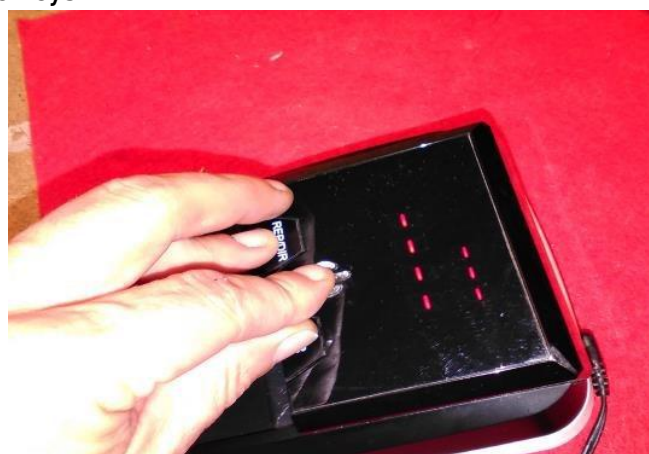
- 12- The window closes. In the Status "File Size" box, the number 214782 is displayed. The update is downloaded.



Update of the detector.

Return to the detector.

- 13- Disconnect the battery (optional).
14- Connect the detector to mains.
15- **Turn off the LD550 detector.**
16- Simultaneously press the "REP / DIR" and "CLR" buttons and switch on the LD550. When a series of dashes appear on the screen, you can release the keys.



- 19- Connect the LD550 detector to the PC using the USB / mini USB data transfer cable (reference 9996.114) provided for this purpose.

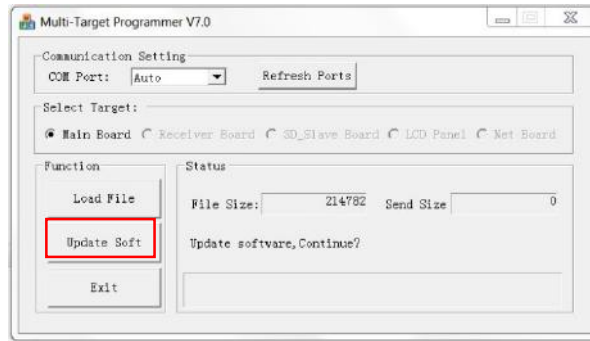
Mini USB
connector
to connect
to the
detector



USB
connector
to connect
to one of
the USB
ports of the
PC



- 20- Return to the PC screen.
21- Click on "Update Soft". A progress bar is displayed and the LD550 device turns off when the update is done.

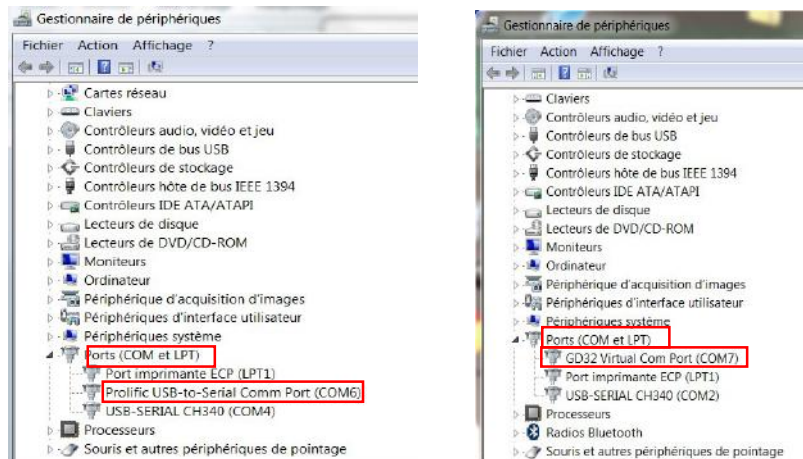


- 22- **Switch on the detector.** The C22 code should be displayed.
- 23- Bravo! The update is performed.
- 24- Do a test with new tickets of 5, 10, 20, 50, 100 and 200 euros.

Causes of dysfunction:

Remember to check in the device manager if the COM and LPT ports appear in the device manager. The detector appears in the device manager only when it is connected to the PC.

Check that "USB-to-Serial Comm Port" or "GD32 Virtual Com Port" (depending on the software installed) also appears.



If USB-to-Serial Comm Port does not appear:

- Check the installation of the driver (driver) pl2303 and in case of absence, download and re-install this driver.
- Try to unplug the detector and change the USB port.
- It is also possible that the update cable is not a data transfer cable (test with another USB /mini USB data transfer cable).



If despite our explanations, you have difficulties to carry out the update, do not hesitate to contact our experts who can remotely, manage your computer and carry out these operations for you: RESKAL After sales service

A.S.S. RESKAL

Tel. : +33 (0)4.73.51.78.20 ou +33 (0)4.73.51.78.15

Mail : sav@wonday.com ou sav@reskal.com

Adresse : Wonday, Parc d'activités « Entre Dore et Allier » – 5 Allée des Acacias - 63 190 LEZOUX